



THE MANHATTAN
REGATTA
2012

Dear Sailors:

J105 Class Fleet 10 invites you for a weekend of competitive sailing and merriment in one of the most exciting ports in the world, New York Harbor.

Please join us for a thrilling and unique racing experience set against the Manhattan skyline. The challenge of navigating between tugs, barges, the Staten Island ferry and the occasional cruise ship, whilst in a strong current, makes for complex tactics and intense competitive racing.

This is an event dedicated solely to the J105 class. Last year there were eight boats on the starting line. This year we expect to see at least a dozen. Courses will be primarily windward/leeward under the watchful gaze of the statue of liberty and multi-support boats.

Social events include an outdoor barbeque aboard Liberty State Park's lightship and an awards party at North Cove Marina on Sunday after racing.

Please bring family and friends to watch the action. Never far from the shores of either New York or New Jersey the race provides spectators, and tourists alike with the site of big boat racing. Probably the only local sailing event where spectators can watch a regatta without ever leaving land.

So we hope you can join us. Please register as soon as possible. No payment is required until the beginning of May 2012.

David Spence
Fleet 10 Captain



Notice of Race

Organizing Authority (OA) – J/105 Class Fleet 10

1 RULES

- 1.1 The regatta will be governed by the rules as defined in *The Racing Rules of Sailing* (RRS), including the US SAILING prescriptions, and *The J/105 Class Rules* (CR), with the exception of provisions under 1.2.
- 1.2 Under RRS rule 87, CR 7.1 may be amended in the sailing instructions to allow for one junior crew.
 - a. Junior crew shall be defined as a crew member under the age 14 whose weight shall not be included in overall crew weight limit.
- 1.3 USCG approved personal flotation devices (PFD) shall be worn at all times. This changes RRS rule 40.

2 ELIGIBILITY AND ENTRY

- 2.1 The regatta is open to all boats of the J/105 class, and all competitors need to be current J105 class members.
- 2.2 Eligible boats may enter by completing the online registration form and paying the entry fee at www.yachtscoring.com/emenu.cfm?eID=603 by 5 pm local time, 18 May 2012.

3 CLASSIFICATION AND ADVERTISING

- 3.1 This is a Level A event under CR 3.6.
- 3.2 A boat and her crew shall comply with ISAF Regulation 20, Advertising Code.

4 Fees

- 4.1 Entry fee of \$125 is required.

5 SCHEDULE OF EVENTS

- 5.1 Dates of Racing: 19 & 20 May 2012
- 5.2 Number of races to be determined at the sole discretion of the Race Committee and sailing conditions.
- 5.3 Friday, May 18
1900 Dockside social at Liberty Landing Marina
Saturday, May 19
1000 Skippers meeting – location provided in sailing inst.
1155 Warning signal for the first race
Approx. 1hr after finish of last race Outdoor barbeque aboard Liberty Landing Lightship

SCHEDULE OF EVENTS (continued)

Sunday, May 20

1025

Approx. 1hr after finish of last race

Warning signal for the first race

Dockside Awards presentation at North Cove

6 SAILING INSTRUCTIONS

- 6.1 The sailing instructions will be available at the Liberty Landing Lightship on 19 May 2012, 0900 and online at www.yachtscoring.com/emenu.cfm?eID=603 after 16 May 2012.

7 VENUE

- 7.1 Racing area to be in New York Harbor in the vicinity of Ellis Island. See Attachment 1.

8 COURSES

- 8.1 The courses may be around government marks, windward-leeward marks set by the race committee, and/or a distance race.
- 8.2 Windward-leeward marks will be inflatable marks.
- 8.3 Course descriptions will be provided in the sailing instructions
- 8.4 The approximate position of the starting area will be announced approximately 45min before the initial warning signal each day. VHF Channel will be in the sailing instructions.

9 PENALTY SYSTEM

- 9.1 Rule 44.1 is changed so that the Two-Turns Penalty is replaced by the One-Turn Penalty, unless the boat has broken a rule while in the *zone*, in which case the penalty shall be a Two-Turns Penalty.

10 SCORING

- 10.1 One-race shall constitute a series.
- 10.2 The Low Point System of Appendix "A" of RRS will apply, except that all races will be scored; there will be no throw-outs.

11 BERTHING

- 11.1 Boats may be berthed at The North Cove <http://www.thenorthcove.com/> or Liberty Landing Marina <http://www.libertylandingmarina.com/> Reservations are essential.

12 HAUL-OUT RESTRICTIONS

- 12.1 Boats shall not be hauled out during the regatta except with the prior permission of the Race Committee.

13 NAVIGATION RULES

- 13.1 Boats interacting in NY Harbor with vessels not racing are cautioned to observe the [USCG Commandant Instruction M16672.2D, Navigation Rules](#) and to yield right of way to vessels restricted in their ability to maneuver, especially to tugs, ferries, and barges. Any boat observed to impede such traffic may receive a DSQ.

14 RADIO COMMUNICATIONS

- 14.1 Except in an emergency, or to report a protest or withdrawal, a boat shall neither make radio transmissions while racing nor receive radio communications not available to all boats. This restriction also applies to mobile telephones.
- 14.2 All yachts shall carry an operable VHF Radio capable of transmitting and receiving on channels 9, 13, 16, 69. VHF channel 69 will be used for communications with the RC.

15 PRIZES

- 15.1 Overall prizes will be given at the end of the regatta to the top three boats

16 DISCLAIMER OF LIABILITY

- 16.1 Competitors participate in the regatta entirely at their own risk, RRS Rule 4, Decision to Race. The organizing authority accepts no liability for material damage or personal injury or death sustained in conjunction with or prior to, during, or after the regatta. As a condition of the participation of any boat in any race or related activity sponsored or undertaken by Fleet 10, the owner and each crewmember agree that the safety of the boat and her crew and the decision whether or not to start or continue to race is solely their responsibility. All competitors waive all claims, which he or she, or any heir, representative, successor or assignee, may have against Fleet 10 and its officers, trustees, members, committees, employees or agents, arising out of or in any way connected with participation in such race or activity.

17 CONTACT INFORMATION

- 17.1 For further information contact:

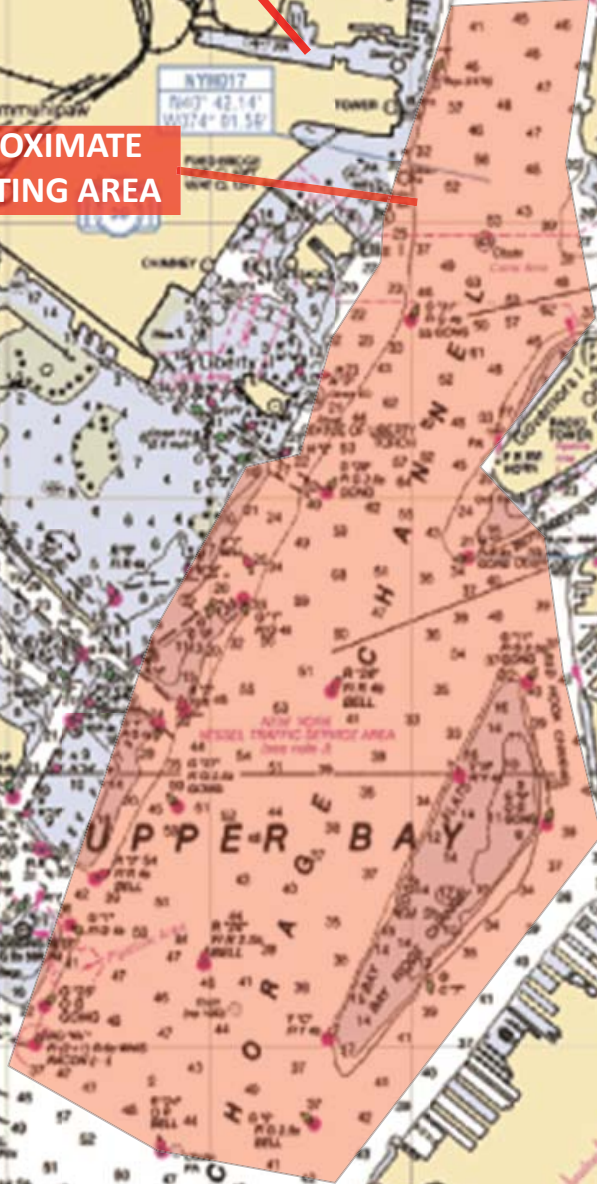
David Spence (Fleet 10 Captain): David@windigodesign.com



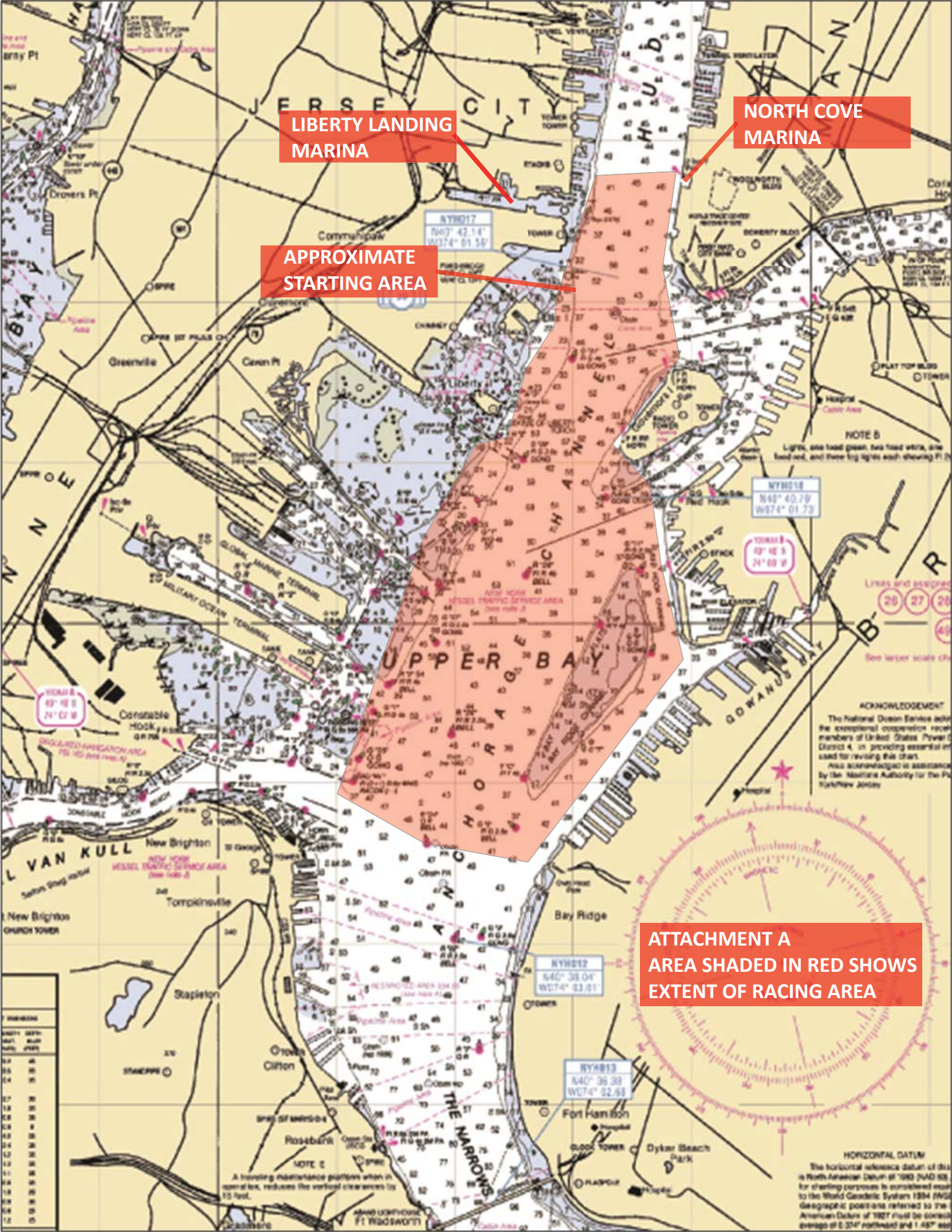
LIBERTY LANDING MARINA

NORTH COVE MARINA

APPROXIMATE STARTING AREA



ATTACHMENT A
AREA SHADED IN RED SHOWS
EXTENT OF RACING AREA



NOTE B
Light, one lead green, two lead white, one lead red, and three top lights each showing P

ACKNOWLEDGEMENT
The National Ocean Service joins the exceptional cooperation received from members of United States Power District 4, in providing essential material for revising this chart.
This nautical chart is assisted by the Maritime Authority for the Port of New York

HORIZONTAL DATUM
The horizontal reference datum of this chart is North American Datum of 1983 (NAD 83). For charting purposes it is considered equal to the World Geodetic System 1984 (WGS 84) geographic positions referred to the American Datum of 1983 must be corrected through of 0.204' northward and 1.487' eastward.

NOTE C
A hoisting distance platform when in normal use, reduces the vertical clearances by 15 feet.

DEPTH	SAFETY	DEPTH	SAFETY
(FATHOMS)	(METERS)	(FATHOMS)	(METERS)
0.5	1.0	1.5	2.8
1.0	1.8	2.0	3.7
1.5	2.7	2.5	4.6
2.0	3.7	3.0	5.5
2.5	4.6	3.5	6.4
3.0	5.5	4.0	7.3
3.5	6.4	4.5	8.2
4.0	7.3	5.0	9.1
4.5	8.2	5.5	10.1
5.0	9.1	6.0	11.0
5.5	10.1	6.5	11.9
6.0	11.0	7.0	12.8
6.5	11.9	7.5	13.7
7.0	12.8	8.0	14.6
7.5	13.7	8.5	15.5
8.0	14.6	9.0	16.4
8.5	15.5	9.5	17.3
9.0	16.4	10.0	18.3
9.5	17.3	10.5	19.2
10.0	18.3	11.0	20.1
10.5	19.2	11.5	21.0
11.0	20.1	12.0	22.0
11.5	21.0	12.5	22.9
12.0	22.0	13.0	23.8